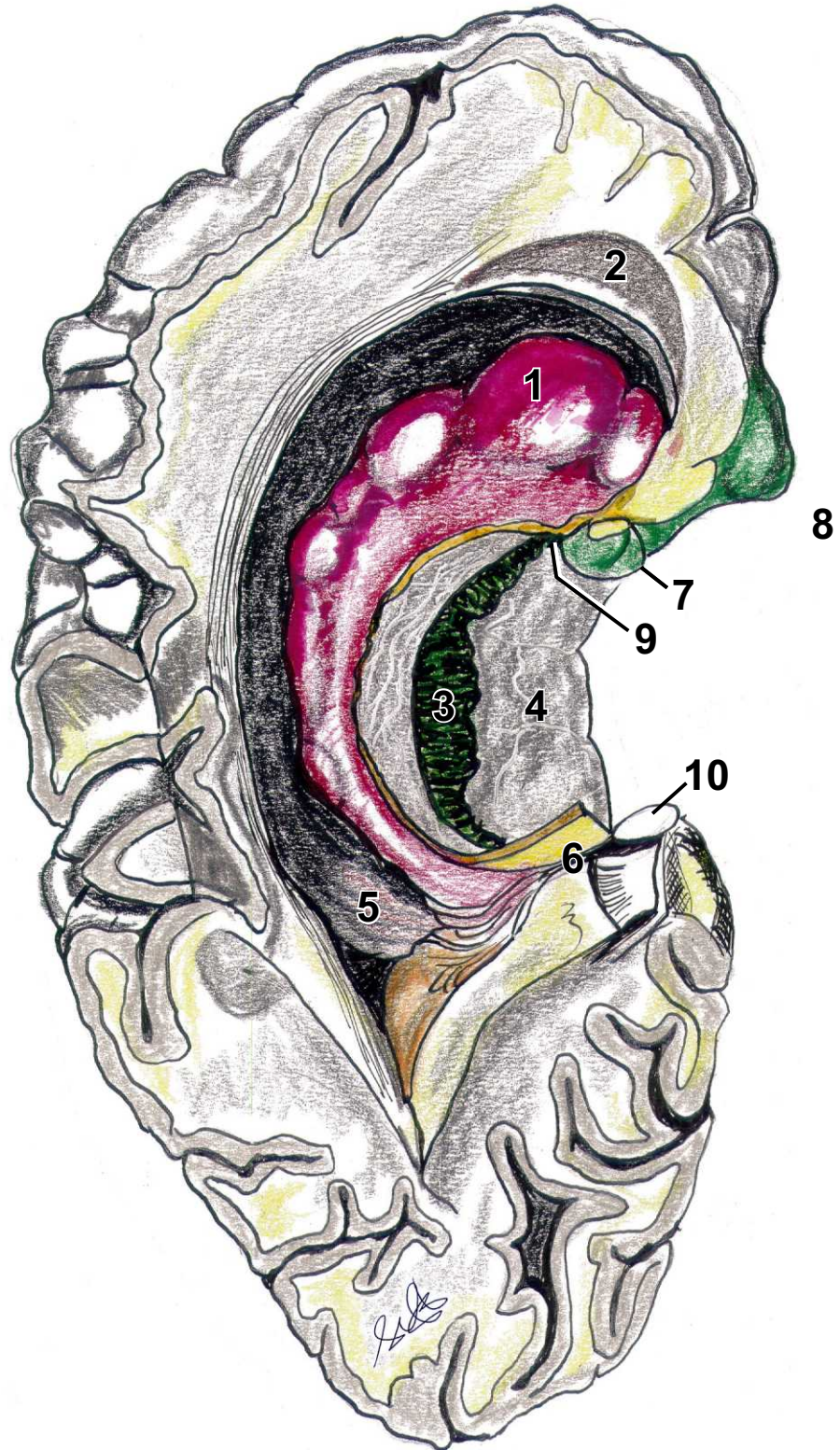


Cornu inferior



Cornu inferior

1. Pes hippocampi
2. Amygdala (Eminentia)
3. Fascia dentata
4. Entorhinale Rinde
5. Trigonum + Eminentia collateralis
6. Fimbria hippocampi
7. Gyrus uncinatus
8. Gyrus intralimbicus } Uncus
9. Cauda (fasciae dentatae) Limbus Jackomini
10. Gyrus fasciolaris (fasciola cinerea)